

# BENTLEY® GEO WEB PUBLISHER™

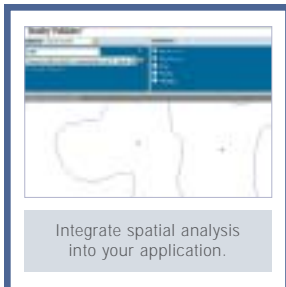
## High-fidelity publishing of geospatial information over the Internet



Bentley® Geo Web Publisher™ 2004 Edition is an easy-to-implement, high-performance Internet server that supports distribution of information in both its original intended form and through dynamically created new representations to geographically dispersed workgroups or public audiences.

A high-performance server, Bentley Geo Web Publisher enables a wide range of applications such as municipal information systems, image or drawing archives, map based navigational sites, project sites, and public information portals. Integrated vector and image server engines publish hybrid vector/raster datasets and a wide range of formats, making it easy to incorporate drawings, maps, models, aerial photography, and images within custom browser presentations.

A range of programming and authoring tools support rapid development of intuitive HTML or Windows client interfaces. To facilitate rapid Web site development, publishers can opt to use an intelligent wizard that guides choices for layout, colors, display controls, tools, and other interface elements and gets the site built and running in a matter of minutes. Designed for rapid deployment, Bentley Geo Web Publisher is simple to install and easy to administer.

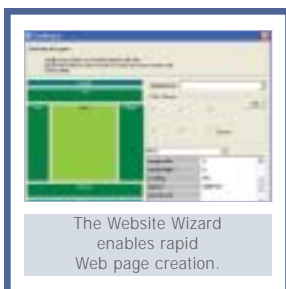


### Maximize the Value of Your Geospatial and AEC Content

Your data is incredibly valuable. You need to share it within in your organization, with other organizations, and with broader public audiences. How you present the information depends upon the audience and how they use the information. Bentley Geo Web Publisher gives you the flexibility to get the right information to the right people at the right time in the right way, and makes it easy to do it routinely through varied presentations that are only limited by your imagination.

### Integrate Database Queries, Spatial Analysis and Other Interactive Interface Elements

Bentley Geo Web Publisher interfaces can benefit from a range of interactive interface elements. Integrate spatial navigation, spatial analysis, and database queries so that users can intuitively search a range of information. Imbed symbols that invoke queries or that link to URLs. View and redline documents. Leverage attribute information embedded as XML in DGN files to publish data-rich, interactive maps and drawings. Print and plot to scale with unmatched output capability to a range of possible devices.



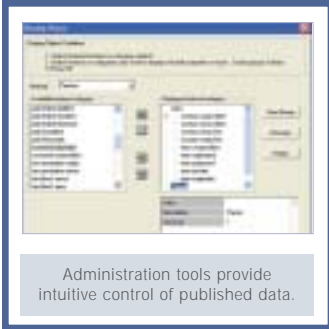
### High-Performance Internet Image Server

Bentley Geo Web Publisher's high-performance Internet Imaging Protocol (IIP) image server streams huge imagery datasets over low-bandwidth connections, without compromising navigation speed. The image server enables publishing workflows through Web clients and also supports production workflows of remotely served image sets to Bentley® Descartes™ and MicroStation GeoGraphics.

### A Rich Set of Development Tools

Client and server-side applications can be developed with standard Web programming tools such as Java, HTML, and ASP. Bentley Geo Web Publisher can also be customized with MicroStation® Programming Language (MDL®) or Picture Script Scene (PSS). MDL, the standard MicroStation development language, can be used in its usual form, or can be specifically adapted for server-side treatments (CGI). PSS is a simple scripting language to drive server-side processing of raster data for such applications as building mosaics on the fly, adding transparency, or creating montages.

## BENTLEY GEO WEB PUBLISHER AT-A-GLANCE



### Enhanced Viewing, Printing and Redlining

- View control (zoom, pan, window area, magnify)
- Measurements
- Feature, Level control
- Map Management interface
- Reference file control
- Saved view selection
- Scaled plotting
- Attach redlines as RDL or RED files in MicroStation or AutoCAD®

### Client-based Printing

- High-quality prints of any size
- Scale control
- Windows printer support

### DGN XFM Support

- Dynamic publishing of DGN XFM files
- Interactive navigation of embedded XML attribute information
- Provides for spatial analysis on the browser

### File Formats

- MicroStation DGN files with raster attachments
- MicroStation CEL files
- AutoCAD DWG and DXF files (AutoCAD 2000/2000i/2002 files)
- MicroStation GeoGraphics projects, including DGN and raster maps
- ESRI SHP files
- Digital InterPlot DPR files
- BMP 1, 4, 8, 24 Bits, Lined; Uncompressed, RLE4 or RLE8
- C29 (Type 29) 8 Bit, Lined or Tiled, Multi-resolution possible; RLE compression
- CALS 1 Bit, Lined; CCITT Group 4 Compression
- CIT (Type 24) 1 Bit, Lined, Multi-resolution possible; CCITT Group 4
- COT (Type 2) 8 Bit, Lined or Tiled, Multi-resolution possible; Uncompressed
- ECW (ERMMapper images)
- FPX 8, 24, 32 Bit, Tiled, multi-resolution; JPEG and Single Color

- GeoTiff 1, 8, 24 Bit, Matrix, ModelTiePoints, ModelPixelScale tags, Lined, Stripped or Tiled, Multi-resolution possible; Deflate, CCITT Group 3, CCITT Group 4, Packbits and JPEG
- HMR 1, 8 Bit, Tiled, Multi-resolution; CCITT Group3, CCITT Group4, Packbits and Deflate
- Image Manager™ Projects 1, 8, 24, 32
- ImageMapped 4, 8 Bit, Lined; Uncompressed
- Image RGB 24 Bit, Lined; Uncompressed
- iTIFF 1, 8, 24 Bit, Stripped or Tiled Multi-resolution; Deflate, CCITT Group3, CCITT Group4, Packbits, RLE and JPEG
- JFIF/JPEG 24 Bit, Lined; JPEG Compression
- PCX 1, 4, 8, 24 Bit, Lined; Uncompressed
- PNG 1, 8, 24, 32 Bit, Lined; Deflate
- PSS 1, 8, 24, 32 Bit
- Raster Manager™ Projects 1, 8, 24, 32 Bit
- RGB (Type 28) 24 Bit, Line or tiled; Uncompressed
- RLC 1 Bit, Lined
- RLE (Type 9) 1 Bit, Lined or Tiled, Multi-resolution possible; RLE Compression
- SID (MrSID images)
- Sun Raster 4, 8 Bit, Lined; Uncompressed
- Targa 24 Bit, Lined; Uncompressed
- TG4 (Type 24) 1 Bit, Tiled, Multi-resolution possible; RLE Compression
- TIFF 1, 8, 24 Bit, Lined, Stripped or Tiled, Multi-resolution possible; Deflate, CCITT Group 3, CCITT Group 4, Packbits and JPEG

### Simple Administration

- Easy deployment
- Local and remote access with Web-enabled user interface management of server status and configuration
- Automatic Web server configuration

### Web Site Creation Wizard

- Save and reload a Web site design project
- Expandable and editable source code
- Web-compliant source code than can be partly or totally merged with any Web site

## BENTLEY GEO WEB PUBLISHER SYSTEM REQUIREMENTS

- Processor: Intel Pentium-based or AMD Athlon-based PC or workstation
- Operating System: Microsoft Windows NT 4Server (SP6 recommended†), Windows 2003 Server
- Prerequisite Application: none
- Memory: 256 MB (512 MB or more typically results in better performance).
- Hard Disk: 1 GB minimum free disk space
- Input Device: Mouse or other Windows pointing device
- Output Device: Most industry-standard devices are supported. Works with output devices supported by Windows.
- Video: Windows-supported graphics card.

## ABOUT BENTLEY

Bentley Systems, Incorporated provides software for the lifecycle of the world's infrastructure. The company's comprehensive portfolio for the building, plant, civil, and geospatial vertical markets spans architecture, engineering, construction (AEC) and operations. With 2003 revenues reaching \$260 million, Bentley is the leading provider of AEC software to the Engineering News-Record Design 500 and major owner-operators.

For more information, visit [www.bentley.com](http://www.bentley.com) or call 1-800-BENTLEY.

**Bentley Worldwide Headquarters**  
Bentley Systems, Incorporated  
Exton, PA, USA  
+1 800 BENTLEY  
+1 610 458 5000

**Bentley International Headquarters**  
Bentley Systems Europe B.V.  
JC Hoofddorp  
THE NETHERLANDS  
+31 23 556 0560

