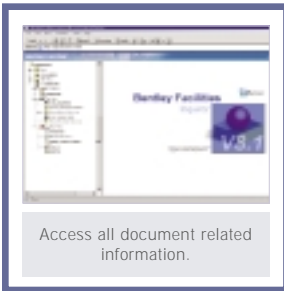


# BENTLEY® FACILITIES INQUIRER

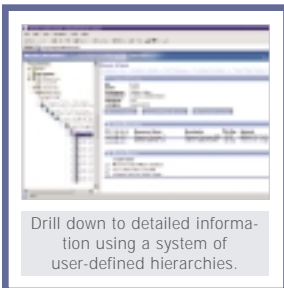


## Facilities information at your fingertips with just a Web browser



Bentley® Facilities Inquirer is a powerful collaboration server that enables you to publish all facilities and asset-related data over the Internet. Bentley Facilities Inquirer enables organizations to increase the value of AEC content by providing review and reporting access to Bentley Facilities Management data sources.

Bentley Facilities Inquirer complements Bentley Facilities Planner, adding controlled access via a Web browser to participants in the facilities management process who only need to review and extract information.



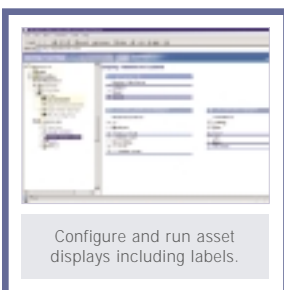
Bentley Facilities Inquirer is a key module in Bentley's overall Facilities solution to help companies create an environment where documents, engineering and asset information are available to the global enterprise via a desktop Web browser.

### Combined access to document and asset data

Bentley Facilities Inquirer uses Bentley's content management and publishing collaboration servers, along with Bentley Facilities Planner functionality, to access both database and document based information and publish facility maps that show all required space and asset information, including asset labels, room labels and thematic resymbolizations.

### Powerful navigate and query options

You can visualize your data structured to a hierarchy of your choice including, a document hierarchy (projects, sub-projects, documents and sets), a location hierarchy (location, site, building, floor, room), or an organizational hierarchy (enterprise, division, department). So drilling down to the right detail level is done in an environment matching the users profile. All of the query features configured in Bentley Facilities Planner are included in Inquirer as well. These query functions allow you to simply pick an existing query definition from the document management environment or create one on the fly.

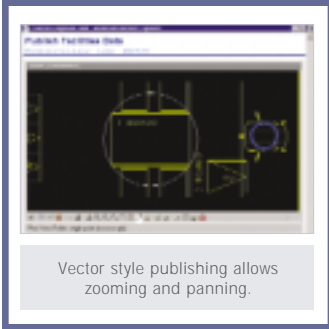


### Easy to Implement, Train and Use

Facilities Inquirer is an extension of Bentley ProjectWise® and Bentley Facilities Planner, so it can be added to any existing client-server implementation of ProjectWise and Facilities Planner; all training of either product is completely applicable to the use of Facilities Inquirer as well. Any new user will find the user interface easy to use, as it can be configured to the individual requirements.



## BENTLEY FACILITIES INQUIRER AT-A-GLANCE



Vector style publishing allows zooming and panning.

### CLIENT SYSTEM REQUIREMENTS

- Processor: Intel® Pentium®-based PC
- Operating system: Microsoft® Windows® XP, Microsoft Windows NT® 4 (SP6 recommended), Windows 98 and Windows 2000
- Web Browser: Microsoft Internet Explorer 5.5 or higher

### SERVER SYSTEM REQUIREMENTS

- Processor: Intel Pentium-based PC
- Operating System: Microsoft Windows NT 4.0 (SP6 or later), Windows 2000 (SP 2)/XP
- Server Memory: Minimum 256 MB of RAM. 512MB of RAM is recommended.
- Disk Space: 800Mb for Facilities Inquirer software and samples.
- Networking: TCP/IP Networking installed

### DATABASE SERVER REQUIREMENTS

Bentley Facilities servers run with Oracle® 8.1.7, Sybase® SQL Anywhere 7 and Microsoft SQL server. Server requirements are based on the database vendor's requirements

### User Access Control

- Access control to the FM data and generic document data based on user login
- Access rights options to specific projects, documents and workflow stages
- Access differentiation through group membership

### Navigation Hierarchies

- User-defined hierarchy for easy, intuitive access to relevant information
- Quick access to the correct level of detail
- Single or mixed hierarchies

### Document Associations

- Complete integration of FM information and associated documents
- Viewer functionality to serve the content of these documents in the browser window

### Facility Map Viewer

- Multiple graphic formats available
- User-definable publishing preferences
- Raster format publishing for quick, casual view on a facility map
- Vector format publishing to allow zooming and panning in the drawing

### Asset and Space Review Page

- On-demand display for up-to-date visualizations of the assets and personnel
- User-defined selection of displayed assets
- Comprehensive grouped attribute display
- Display of linked assets and spaces
- Display of documents links
- Display of relevant reports

### User Settings

- Password review option and password change option
- User-selectable navigation hierarchy

### Product Prerequisites

Facilities Inquirer requires a running Bentley Facilities datamodel as created by Bentley Facilities Planner and ProjectWise. Document publishing functionality requires Bentley® Publisher™. For configuring and running predefined reports, an installation of Bentley Facilities Reports is required.

### Query Processor

- Pre-defined query definitions to find selected spaces, assets, or personnel
- Option to use pre-defined query as basis for custom query
- Save option for queries for future use in the document management area
- Option to locate any spaces or assets in query results

### Flexible Reporting Options

- Alphanumeric report output for display anywhere in a Web browser window
- Catalog options for recurring reports for charge-back and inventory purpose
- Fast and simple way to accelerate the process of disseminating and digesting large amounts of data
- Thematic resymbolization option to present query results visually
- Color fill or (cross-) hatched display of spaces in the based on query results

### Asset and Space Locator and Publisher

- Locate capability to automatically open the correct drawing and zoom in to the asset or space
- User-defined labeling settings for attributes and label position
- Significant reduction of time needed to find essential information
- Display filter selection for user-defined detail level

### Redlining Option

- Option to complement graphic information
- Read-only access to master data
- Guaranteed data integrity of master data

## CALL TODAY FOR MORE INFORMATION

Bentley Systems, Incorporated, is a global provider of collaborative software solutions that enable our users to create, manage and publish architectural, engineering and construction (AEC) content. As a part of those solutions, Bentley provides professional services including implementation, integration, customization and training.

Visit us on the Web for more information about Bentley solutions and services. [www.bentley.com](http://www.bentley.com)

**Bentley North American Headquarters**  
Bentley Systems, Incorporated  
685 Stockton Drive  
Exton, PA 19341 USA  
Phone: +1 800 BENTLEY (+1 800 236 8539)  
Outside the US +1 610 458 5000  
Fax: +1 610 458 1060

**Bentley International Headquarters**  
Bentley Systems Europe B.V.  
Wegalaan 2  
2132 JC Hoofddorp  
THE NETHERLANDS  
Phone: +31 23 556 0560  
Fax: +31 23 556 0565

To find a local Bentley office, please visit [www.bentley.com/corporate/contacts](http://www.bentley.com/corporate/contacts).

