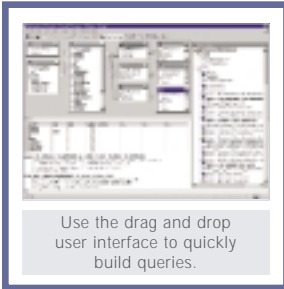


BENTLEY® FACILITIES REPORTS



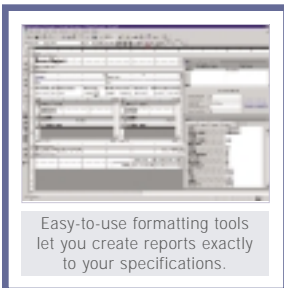
Fast and easy reporting for Bentley Facilities data sources



Use the drag and drop user interface to quickly build queries.

Bentley® Facilities Reports enables the facility manager to create and run Microsoft® Access 2000 reports against Bentley Facilities data sources. The full query building and formatting options of Access 2000, along with the Visual Basic® capabilities, make the Facilities Reports application an easy, yet powerful tool for creating any ad-hoc or recurring report. The Facilities Reports application uses the Bentley Facilities API to access the facilities data so all the features available in the Bentley Facilities products, such as proposals and versions and multi-languages, are fully supported.

Bentley Facilities Reports is fully integrated with Bentley® ProjectWise® and Bentley Facilities Planner. All report definitions are stored in the document management environment and the creation of reports can be initiated from within a Facilities Planner session.



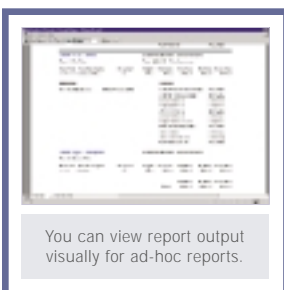
Easy-to-use formatting tools let you create reports exactly to your specifications.

Combination of Bentley Facilities and Microsoft Access 2000

Bentley Facilities Reports is implemented as an add-in to Access 2000. This allows you to use the familiar, highly graphic Access 2000 user interface for query building and output formatting. Bentley Facility datamodels may be configured to allow the Facilities Reports templates to be applied to selections made in Facilities Planner.

OLE DB Data Provider

The reports application interprets the schema of the facilities dataserver and presents FM business objects such as spaces and assets as virtual tables in the Access 2000 user interface. You simply drag virtual table definitions and virtual link definitions into the query window to create rough output for further refining. The reports application uses a Microsoft data engine (MSDE) database to hold the definitions of the virtual tables and views, report templates and procedures. This database is stored in the document management layer as a report container (RTC file), so normal user access control applies for the Reports application.



You can view report output visually for ad-hoc reports.

Available as Designer and Viewer Version

The Facilities Reports application is available in two versions. Administrators and users who author and maintain report templates will use Facilities Reports Designer. This version is built on a prerequisite installation of Access 2000 and has all administration and editing capabilities. For users who only want to execute ready-made report templates with a minimum of prerequisites, the Facilities Reports Viewer is available. The viewer version includes all of prerequisite components from Access 2000 in a run-time version.



BENTLEY FACILITIES REPORTS AT-A-GLANCE



Create print optimized output.
Publish reports with MS Word.

SYSTEM REQUIREMENTS

- Processor: Intel® Pentium® (or equivalent) processor or better required
- Operating System: Windows® 95 OSR 2.5, Windows 98, Windows 98 Second Edition, Windows ME, Windows NT® 4.0 SP6, Windows 2000, XP)
- Memory: 96 MB RAM (Windows 9X/ME) 128 MB RAM (Windows NT4/2000/XP)
- Disk Space: 20 MB of for the Reports application and 35 MB for MSDE
- Prerequisites: Bentley Facilities Reports requires Microsoft Internet Explorer 4.01 SP1 or higher components to operate. The Facilities Report Designer requires Microsoft Access 2000 SR1 to operate. The Facilities Report Viewer operates with Microsoft Access 2000 SR1 Runtime, which is included in the Reports setup package. The Facilities Reports setup package includes and installs Microsoft Data Engine 1.0 if it is not already installed in the system.

SYSTEM REQUIREMENTS FOR FACILITIES REPORTS V8

- Processor: Intel Pentium-based (or equivalent) PC or workstation
- Operating System: Windows NT 4 SP6, Windows 2000, or Windows XP
- Memory: 96 MB RAM (on Windows NT 4) 128 MB RAM (on Windows 2000) 192 MB RAM (on Windows XP)
- Disk Space: 200 MB minimum free disk space during installation

Graphic User Interface

- Ease of use of Microsoft Access with point and click style interface
- Visual query builder
- Visual report template layout

Complete Integration with Bentley Facilities Planner and Bentley ProjectWise

- Access control integrated with document management
- Enforcement of use of approved and up to date data
- Reports initialization within Facilities Planner session.
- Graphic selection methods of Facilities Planner

Multiple Datasource Connections

- OLE DB data provider supports multiple connections allowing distributed FM servers
- Ability for report data to roll up to a central master report

Proposal and Version Support

- Datasource connection to individual proposal version
- Parallel connection for report on present vs. proposal version status

Multi-language Support

- Display of object names, attribute labels and pick list entries follow PC locale setting
- Ability to create reports in the correct language without additional translation required

Product Prerequisites

Bentley Facilities Reports requires a running Bentley Facilities datamodel as created by Bentley Facilities Planner and ProjectWise

Stand-alone Installation Option

- All document management, facility management and Access 2000 run-time components included
- Upgrade option to existing Bentley Facilities or ProjectWise clients

Advanced Options

- Stored procedures to optimize data retrieval and provide additional throughput
- User selection of internal object and attribute names or user defined labels
- Option to activate format strings to control display of data
- Optional string indexes for text-based queries
- Selection of area classification activation
- User-definable fault tolerance option
- Integration with Facilities Inquirer for preformatted reports via Web browser

Batch Reports

- Batch reporting option through a command line interface
- Predefined reports created in a silent mode without user intervention

CALL TODAY FOR MORE INFORMATION

Bentley Systems, Incorporated, is a global provider of collaborative software solutions that enable our users to create, manage and publish architectural, engineering and construction (AEC) content. As a part of those solutions, Bentley provides professional services including implementation, integration, customization and training.

Visit us on the Web for more information about Bentley solutions and services. www.bentley.com

Bentley North American Headquarters
Bentley Systems, Incorporated
685 Stockton Drive
Exton, PA 19341 USA
Phone: +1 800 BENTLEY (+1 800 236 8539)
Outside the US +1 610 458 5000
Fax: +1 610 458 1060

Bentley International Headquarters
Bentley Systems Europe B.V.
Wegalaan 2
2132 JC Hoofddorp
THE NETHERLANDS
Phone: +31 23 556 0560
Fax: +31 23 556 0565

To find a local Bentley office, please visit www.bentley.com/corporate/contacts.

